



# Pendlebury Centre

[www.PendleburyCentre.org.uk](http://www.PendleburyCentre.org.uk)



Policy Title:

**Pendlebury Centre Uniform – Guide for Students and Parents/Carers**

Last Reviewed & Updated:

**July 2017**

Due for Review:

**July 2019**

# Pendlebury Centre Uniform Guide



*The Pendlebury Centre is, like any school, a place of work.*

*Like any place of work, one of the conditions of attending the Centre is sticking to basic uniform rules.*

A to Z of Items	Guidance
Hair	<ul style="list-style-type: none"> <li>No extreme fashion hairstyles are permitted e.g. tramlines or patterns.</li> <li>No unnatural colours or two-tone hair colouring is acceptable.</li> </ul>
Headscarves	<ul style="list-style-type: none"> <li>Where headscarves are worn as a religious observance, they must be a plain navy or black colour with no logos.</li> </ul>
Hoodies	<ul style="list-style-type: none"> <li>Hoodies, including those with zips, are not acceptable.</li> <li>Hoodies worn in place of an outdoor coat must be removed at reception.</li> </ul>
Jewellery	<ul style="list-style-type: none"> <li>One watch, one ring, one discreet necklace, one small stud/sleeper per ear.</li> <li>For health and safety reasons, hoops should not be large enough to get a finger through.</li> <li>Students will be given permission, as and when requests are made, to wear charity wristbands to mark key weeks and events.</li> </ul>
Jumpers	<ul style="list-style-type: none"> <li>School jumper, in line with mainstream school.</li> <li>Plain sweatshirt in black, navy or school colour.</li> <li>Plain black cardigan.</li> </ul>
Make-Up	<ul style="list-style-type: none"> <li>Students may wear light make-up.</li> <li>False nails should be neutral coloured and not excessively long.</li> <li>False eyelashes and excessive make-up is not acceptable.</li> </ul>
Outdoor Clothing	<ul style="list-style-type: none"> <li>No outdoor coats, hats, gloves or neck scarves are to be worn in classrooms, indoor social areas or other work spaces. These must be removed at reception.</li> </ul>
Piercings	<ul style="list-style-type: none"> <li>No facial piercings or tongue piercings should be visible.</li> <li>Students will be asked to remove all visible facial or tongue piercings.</li> </ul>
Shirts	<ul style="list-style-type: none"> <li>Formal white shirt with a collar.</li> <li>White polo shirt with no logos.</li> </ul>
Shoes	<ul style="list-style-type: none"> <li>Plain black footwear.</li> <li>Footwear with obvious logos, brand names or markings in a second colour will not be permitted.</li> <li>Boots, including ankle boots are not acceptable.</li> </ul>
Skirts	<ul style="list-style-type: none"> <li>Black cotton / fabric skirt with no logos except school logo.</li> <li>Skirts must be worn at an appropriate length – not rolled up.</li> <li>No other styles or makes of skirt are acceptable.</li> </ul>
Socks	<ul style="list-style-type: none"> <li>Ankle height socks only.</li> </ul>
Tights	<ul style="list-style-type: none"> <li>Plain black or flesh-coloured tights are to be worn.</li> <li>No coloured or patterned tights are acceptable.</li> </ul>
Trousers	<ul style="list-style-type: none"> <li>Plain black, formal trousers that are loose fitting and full length.</li> <li>Jeans, denim trousers, jogging bottoms or combat-style trousers are not acceptable.</li> <li>Any trousers with rivets/studs and/or pocket zips are not acceptable.</li> <li>Tight fitting trousers, leggings or jeggings are not acceptable.</li> </ul>
Ties	<ul style="list-style-type: none"> <li>School tie should be worn for all mainstream school visits, otherwise optional.</li> </ul>

## Some Examples of Correct Uniform



Shirt and Tie



Polo Shirts



Jumper



Formal Skirt

- minimum just above the knees



Loose-Fitting Formal  
Trousers

- Plain black or navy socks
- Plain black or flesh-coloured tights
- 1 set of small ear rings
- 1 discreet ring
- 1 watch
- Skirts at a appropriate length



### **SHOES**

Plain

All Black

Lower Ankle Height





## Some Examples of Incorrect Uniform

### SKIRTS

- *Skirts should not be rolled up to make shorter*
- *Skirts should not be too tight*
- *Skirts should not be pulled up to make shorter*



### TROUSERS

**No Studs**  
**Not Tight**  
**Not Casual**

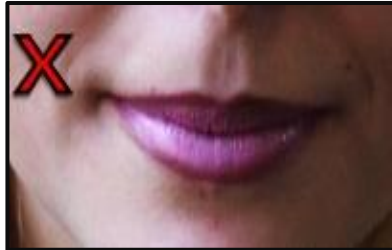
### SHOES

**No Logos**  
**No Boots**  
**No Heels**





No Body Piercings  
No Excessive Jewellery



No Brightly-Coloured  
Make-Up



No Extreme Haircuts  
No Brightly-Coloured Hair Dye